

60.XX Heating Thermostat with LCD Screen

60.XX_V1.0_2015.11.30

Heating thermostat with LCD screen, which has manual mode. The thermostat is recommended for the control of electric heating device or on/off valve actuator used in hydronic heating.

Parameter:

Model	Current	Application
60.13	3A	Built-in sensor, for control of electric or electro-thermal actuator
60.16	16A	Built-in sensor, for control of electric heating cable or other electric heating device
60.26	16A	Built-in & floor sensor, for electric heating device, only display room temperature
60.36	16A	Built-in & floor sensor, for electric heating device, display room or floor temperature it can be chosen

Voltage: 220V/230V

Power consumption: 2 W

Setting range: 5~35°C (can adjust to 5~90°C)

External limitation: 5~60°C (factory setting 35°C)

Sensor: NTC internal/external sensor

Switching differential: $\pm 1^\circ\text{C}$

Ambient temperature: -5~50°C

Protective housing: IP20

Housing material: anti-flammable PC

User operation:

1) ON/OFF: "⏻"

2) Manual: "⏻"

Press "⏻" key, chose temperature setting or time setting.

Press the "⏻" key for 3 seconds, LCD screen display room & floor temperature for switching.

3) Under in temperature setting mode

Press "Δ" key to increase the set value, and press "∇" key to decrease, every step is 0.5°C.

4) Under in time setting mode

Press "Δ" or "∇" key to adjust present time.

5) Under in temperature calibration

Press "+" and "-" key for 3 seconds into adjust temperature calibration

press "+" or "-" to adjust present checked value, adjustable scale: 9.9°C

Sensor Failure:

Please select the right sensor mode when operation, it will display the "Err" symbol on screen for sensor failure. Thermostat must be checked till the fault is eliminated.

Attention:

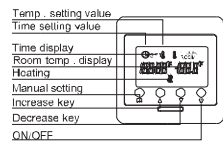
The thermostat which connect the electric heating device is apply to full load (3200W) heating cable in 2500m height above sea level, and the rated power of external load should be less than or equal to 80% rated power thermostat when in the 2500m to 4200m height.



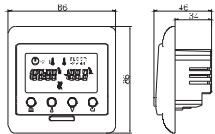
60.XX Heating Thermostat with LCD Screen

60.XX_V1.0_2015.11.30

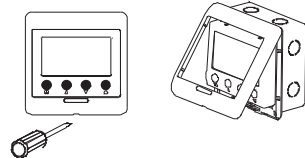
Function and display description



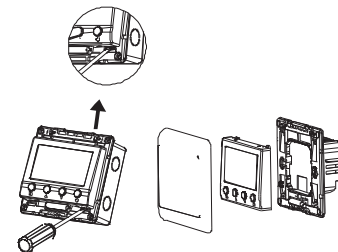
Dimension:mm



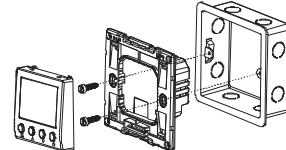
1. Release the front cover by inserting a screwdriver into bottom crack.



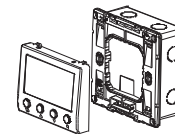
2. To pry out the snaps from four directions.



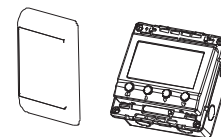
3. After connecting wires, mounting the backing plate in the wall box by screwdriver.



4. Mounting the thermostat on the backing plate.

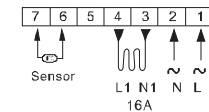


5. Remount the cover and frame.

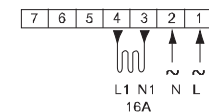


60.26

60.36



60.16



60.13

