

## E91...Touch Screen Programming Thermostat

Weekly circulation digital programming thermostat with LCD touch screen, which has 6-event everyday. Manual mode and programme mode could be selected. The thermostat is recommended for control of electric heating devices or on/off valve actuator used in hydronic floor heating.

### Selection Table:

Model	Current	Application
E91.713	3A	Built-in&floor sensor, floor limit sensor weekly programme
E91.723	3A	Built-in&floor sensor, floor limit sensor weekly programme a potential-free output
E91.716	16A	Built-in&floor sensor, floor limit sensor weekly programme

### Parameter:

Voltage:220V/230V  
 Power consumption:2W  
 Setting range:5~90°C (can adjust to 35-90?)  
 Limitation setting:5...80?  
 (Factory setting:35?)  
 Switch differential:0.5-10? adjustable factory setting?  
 Ambient temperature:-5~50°C  
 Protective housing:IP20  
 Housing material: anti-flammable PC



### User operation:

- 1) on/off: "O"
- 2) At clock-controlled programme mode, press "▲" or "▼" enter to temporary control.
- 3) UP: "▲", DOWN: "▼" to adjust the temperature value.
- 4) press clock "⌚" key for 5 seconds then enter to clock set, choose modified item by pressing clock "⌚", press UP/DOWN "▲▼" to modify the date and clock, then switch off to quit.
- 5) press manu "☐" to choose manual mode or programme mode.
- 6) set temperature and clock display alternately, room temperature can be read out directly.
- 7) press both "▲" "▼" for five seconds to engage/disengage key-lock function key-lock on shows "🔒"  
 ("🔒" this symbol disappeared that shows key-lock off)

### Function:

- Manual mode
- Clock-controlled programme mode
- Heating on
- Wake-up, event 1
- Leave(am), event 2
- Return(am), event 3
- Leave(pm), event 4
- Return(pm), event 5
- Sleep, event 6

### Programming:

Press Manu key for 5 seconds to start programming

Key	Event	Symbol	Time	Modify	Temp.	Modify
	1		06: 00	Δ		Δ
	2		08: 00	▽		▽
	3		11: 30		15°C	
	4		12: 30		15°C	
	5		17: 00		22°C	
	6		22: 00		15°C	
Day	1		08: 00		22°C	
	2		23: 00		15°C	

### Note:

- 1) The pre-programmed setpoint(15°C) for event 3&4 is the same as event 2, please reset it according to your individual requirement.
- 2) Symbol "OFF" will be displayed if the setpoint reaches the minimum set value and the thermostat is switch off. In this event,

### Advanced setting(qualified person preferred):

Usually finished at mounting thermostat.  
 Press key simultaneously press power on key when in power off.



1ADJ: Temperature calibration  
 Press or key to adjust present checked value, adjustable scale:9.9°C.  
 Re-press manu key to enter to next step.



ZSEN: Sensor mode  
 Press or key to choose sensor working mode IN: built-in, OUT: floor sensor, ALL: both sensors, floor sensor is the limit sensor  
 Re-press manu key to enter to next step.



3LIT: Modify limitation value  
 Press or key to modify the temp.  
 Limit value/limitation range:5-80  
 Re-press manu key to enter to next step.



4DIF: Switch differential setting  
 Press or key to change switch differential  
 Setting range:0.5-10 .  
 Re-press manu key to enter to next step.



5LTP: Start anti-frozen function in power off  
 Press or key to change the present anti-frozen function  
 Re-press manu key to enter to next step.



6PRG: Set day off mode  
 Press + or - to choose day off  
 5/2 day mode, 6/1 day mode, 7 day mode  
 Re-press manu key to enter to next step.



7RLE: Potential-free output and main power output in same/different way.  
 Press or key to change the present linkage state.  
 00: in same way, 01: in different way?  
 Re-press manu key to enter to next step.



8DLY: Delay time of potential-free output  
 Press or key to change linkage delay time  
 Range:0-5min.  
 Re-press manu key to enter to next step.



9HIT: Max. Temperature setting  
 Press or key to change the Max. value  
 Range:35-90?  
 Re-press manu key to enter to next step.



AFAC: Reset to factory setting  
 Press key for 5seconds till showing --  
 Reset to factory setting  
 Switch off for saving setting

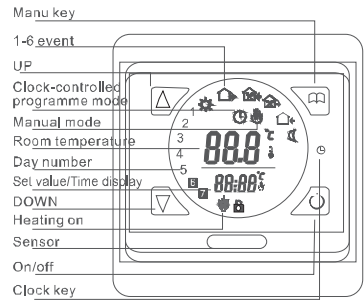
## INSTRUCTIONS

E91...Touch Screen Programming Thermostat

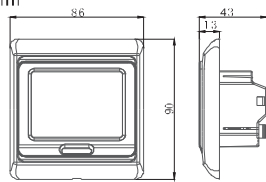
Sensor Failure

E0:Built-in sensor short-circuited or disconnected.  
 E1:External sensor short-circuited or disconnected.  
 When shows E0/E1 error,thermostat must be checked  
 till the error is eliminated

Display symbols

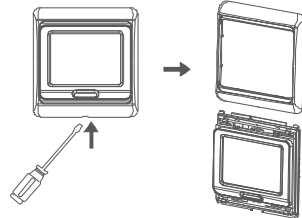


Dimension:mm

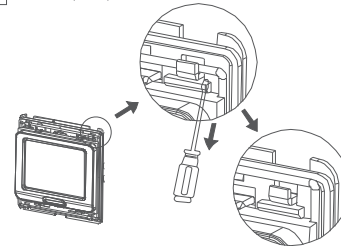


Mounting steps:

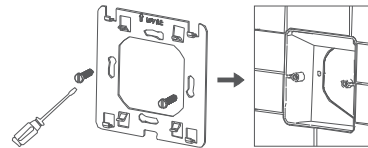
1 Release the front cover by inserting a screwdriver into bottom crack.



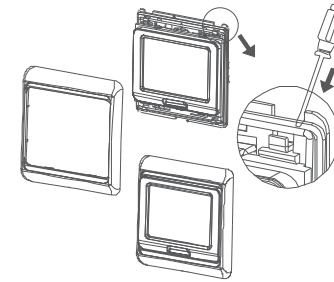
2 Take the backing plate apart according to the following diagram.



3 Mounted the backing plate in the wall socket by screwdriver.



4 After connect wires(see right diagram), the thermostat mounts on the backing plate and remounted the cover and frame.



Connecting Diagram

Attention:  
 The thermostat which connect the electric heating device is apply to full load(3200W) heating cable in 2500m height above sea level,and the rated power of external load should be less than or equal to 80%rated power-thermostat when in the 2500m to 4200m height.

INSTRUCTIONS

