

## E31...Heating Thermostat with LCD Screen.

Heating thermostat with LCD screen, which has manual mode and energy saving mode. The thermostat is recommended for the control of electric heating device or on/off valve actuator in hydronic underfloor heating.

### Selection Table:

Model	Current	Application
E31.113	3A	Built-in&floor sensor, floor limit sensor
E31.123	3A	Built-in&floor sensor, floor limit sensor, a potential-free output
E31.116	16A	Built-in&floor sensor, floor limit sensor

### Parameter:

Voltage:220V/230V

Power consumption:2W

Setting range:5~35℃(can adjust to 5-90℃)

External limitation:5...60℃(factor setting 35℃)

Sensor:NTC internal/external sensor




Switch differential:0.5-10℃ adjustable  
factory setting:±1℃

Ambient temperature:-5~50℃

Protective housing:IP20

Housing material: anti-flammable PC

### User operation:

1)ON/OFF and Mode choosing  
Slide the power switch to  for energy saving mode, to  for manual mode ,to  for Off.

2)Modify the temperature value  
Press + key to increase the set value,and press - key to decrease,every step is 0.5℃.

### Advanced setting (qualified person preferred):

Usually finished at mounting thermostat.

Press + key simultaneously sliding the power on button to energy saving mode when in power off state.

➤ 1ADJ:Temperature calibration  
Press I or key to adjust present checked value  
Adjustable scale: +9.9℃



➤ 2SEN:Sensor mode  
Press I or key to choose sensor working mode  
IN:built-in. OUT:floor sensor.  
ALL:both sensors,floor sensor is the limit sensor



➤ 3LIT: Modify limitation value  
Press I or key to modify the temp. Limit value  
Limitation range:5~60℃



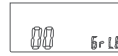
➤ 4DIF:switch differential setting  
Press + or - key to change switch differential  
Setting range:0.5~10℃.



➤ 5LTP:Start anti-frozen function in power off state..  
Press + or - key to change the present anti-frozen function



➤ 6RLE:Potential-free output and main power output in same/ different way.  
Press I or key to change the present linkage state.  
00:in same way,  
01:in different way



➤ 7DLY:delay time of potential-free output  
Press + or - key to change linkage delay time  
Range:0-5min.



## INSTRUCTIONS

➤ 8HIT:Max. Temperature setting  
Press I or key to change the Max value  
Range:35-90℃



➤ 9FAC:Reset to factory setting  
Press I key for 5seconds till showing  
Reset to factory setting



### Attention:

Switch off After finish the advanced setting, the modified function will operate in re-open.Please modify setting carefully.

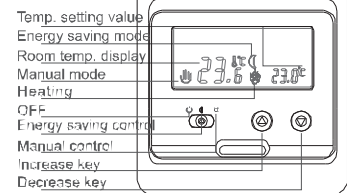
### Sensor Failure

E0:Built-in sensor short-circuited or disconnected.  
E1:External sensor short-circuited or disconnected.  
When shows E0/E1 error,thermostat must be checked till the error is eliminated

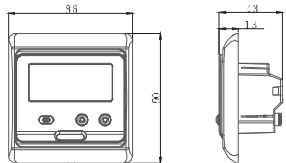
## E31...Heating Thermostat with LCD Screen.

### Display symbols

E31...

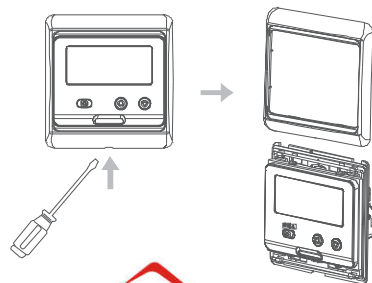


### Dimension:mm

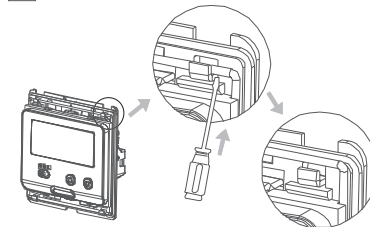


### Mounting steps:

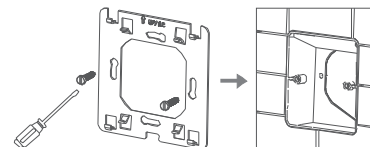
- 1 Release the front cover by inserting a screwdriver into bottom crack.



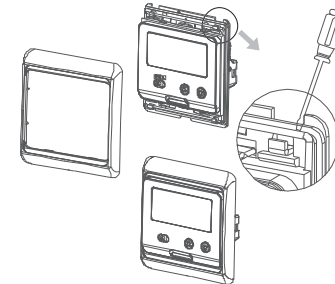
- 2 Take the backing plate apart according to the following diagram



- 3 Mounted the backing plate in the wall socket by screwdriver.



- 4 After connect wires(see right diagram),the thermostat mounts on the backing plate and remounted the cover and frame.



### Connecting Diagram

#### Attention:

The thermostat which connect the electric heating device is apply to full load(3200W) heating cable in 2500m height above sea level and the rated power of external load should be less than or equal to 80%rated power thermostat when in the 2500m to 4200m height.

## INSTRUCTIONS

