

E62...Heating Thermostat with LCD Screen.

INSTRUCTIONS

Programming heating thermostat with LCD screen, which has manual mode and clock-controlled programme mode. The thermostat is recommended for the control of electric heating device or on/off valve actuator in hydronic underfloor heating.

Selection Table:

Model	Current	Application
E62.113	3A	Built-in&floor sensor,floor limit sensor
E62.123	3A	Built-in&floor sensor,floor limit sensor,a potential-free output
E62.116	16A	Built-in&floor sensor,floor limit sensor
E62.103	3A	A group of change potential-free output

Parameter:

Voltage:220V/230V

Power consumption:2W

Setting range:10~55°C(can adjust to 5-90°C)

External limitation:5...60°C(factory setting 35°C)

Switch differential:0.5-10°C adjustable
factory setting±1°C

Ambient temperature:-5~50°C

Protective housing:IP20

Housing material: anti-flammable PC



User operation:

1)ON/OFF and Mode choosing

Slide the power switch to for energy saving mode, to for clock program mode,to for Off.

2)Modify the set temperature value

Press key to increase the set value,and press key to decrease, every step is 0.5°C.

3)Clock set

Press on & at the same time, the signal of "hour"and "minutes" are flicker, then press on & to adjust "minutes"; Press on to turn on"hour", the "hour" will flicker, then press on & to adjust "hour". Press again, the adjust completed.

4)Programming

Press the manu key for 5 seconds to enter the clock program when switch on. Programmed 24-event time by press UP and DOWN key:

key is for comfortable (high temperature) Key is for energy saving (low temperature),press key to enter next event when in high temperature state,press key to enter next event when in low temperature state.

Press key to enter comfort temperature (hi-temp)

setting,press & key to modify the set value,Re-press key to enter energy saving temperature (low-temp), press & key to modify the set value. Switch off and re-switch on or no operate for ten seconds will quit programming set,then enter normal working display.

Sensor Failure

E0: Built-in sensor short-circuited or disconnected.
E1: External sensor short-circuited or disconnected.
When shows E0/E1 error, thermostat must be check till the error is eliminated.

Advanced setting

(qualified person preferred):

Usually finished when thermostat is mounting. Press key simultaneously switching on the thermostat to enter advanced setting.

1ADJ:Temperature calibration
Press or key to adjust present checked value
Adjustable scale: - 9.9°C
Re-press key to enter next advanced setting step



2SEN:Sensor mode
Press or key to choose sensor working mode IN:built-in, OUT:floor sensor, ALL:both sensors
Floor sensor is the limit sensor
Re-press key to enter next advanced setting step



3LIT:Limitation value modify
Press or key to modify the temp. limit value
Limitation range:5~60°C
Re-press key to enter next advanced setting step



4DIF:switch differential setting
Press or key to change switch differential
Setting range:0.5~10°C
Re-press key to enter next advanced setting step



5LTP:Start anti-frozen function in power off.
Press or key to change the present anti-frozen state.
Re-press key to enter next advanced setting step



6RLE:Potential-free output and main power output in same/different way.
Press or key to change the present linkage state
00:in same way. 01:in different way.
Re-press key to enter next advanced setting step. 02:in Primary and secondary reverse.03:in Main and auxiliary reverse, do not turn off and antifreeze, to stop output.



7DLY:delay time of potential-free output
Press or key to change linkage delay time,range:0-5min.
Re-press key to enter next advanced setting step



8HIT:Max. Temperature setting
Press or key to change the Max.v-alue,range:35-90°C
Re-press key to enter next advanced setting step

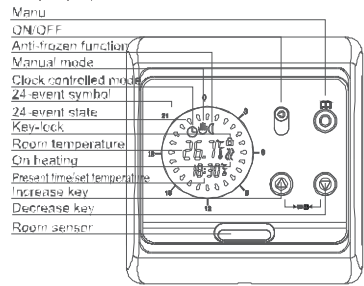


9FAC:Reset to factory setting
Press key for 5seconds till display reset to factory setting
Re-press key to enter next advanced setting step

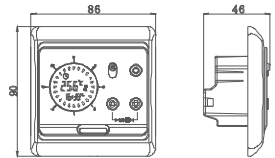
Slide to power off for saving,then quit the advanced setting

E62...Heating Thermostat with LCD Screen.

Display symbols:

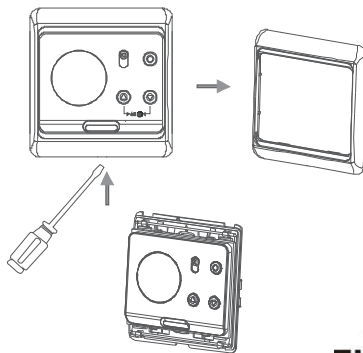


Dimension:mm

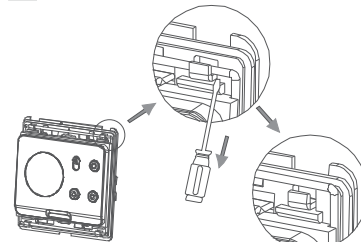


Mounting step:

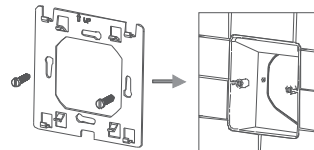
1 Release the front cover by inserting a screwdriver into bottom crack.



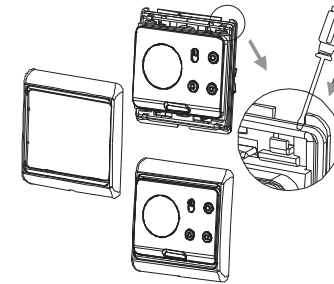
2 Take the backing plate apart according to the following diagram.



3 Mounted the backing plate in the wall socket by screwdriver.



4 After connect wires(see right diagram),the thermostat is mounted on the backing plate and remounted the cover and frame.



Connecting Diagram

Attention:

The thermostat which connect the electric heating device is apply to full load(3200W) heating cable in 2500m height above sea level,and the rated power of external load should be less than or equal to 80%rated power of thermostat when in the 2500m to 4200m height.

INSTRUCTIONS

